

Test Report

Report No. SCL01J01793501

Page 1 of 6

Applicant SHENZHEN HAOTIAN ELECTRONICS CO LTD
Address B13 AROUND MAOXHOU INDUSTRIAL SA COMMUNITY SONGGANG
STREET STBAOAN SHENZHEN

The following sample(s) and sample information was/were submitted and identified by/on the behalf of the client

Sample Name 涤纶电容器
Color 绿色
Sample Received Date Mar. 28, 2017
Testing Period Mar. 28, 2017 to Mar. 31, 2017

Test Requested As specified by client, to test Lead(Pb), Cadmium(Cd), Mercury(Hg), Hexavalent Chromium(Cr(VI)), Polybrominated Biphenyls(PBBs), Polybrominated Diphenyl Ethers(PBDEs), Phthalates(DBP, BBP, DEHP, DIBP) in the submitted sample(s).

Test Method/ Test Result(s) Please refer to the following page(s).

Tested by

Lina Liu

Reviewed by

Danna Yan

Approved by

Danny Liu

Date

Mar. 31, 2017

Danny Liu
Technical Manager

Centre Testing International Group Co., Ltd.

Hongwei Industrial Zone, Bao'an 70 District, Shenzhen, Guangdong, China

No. R289327683

Report Seal

Test Report

Report No. SCL01J01793501

Page 2 of 6

Test Method

Tested Item(s)	Test Method	Measured Equipment(s)
Lead(Pb)	IEC 62321-5:2013 Ed.1.0	ICP-OES
Cadmium(Cd)	IEC 62321-5:2013 Ed.1.0	ICP-OES
Mercury(Hg)	IEC 62321-4:2013 Ed.1.0	ICP-OES
Hexavalent Chromium(Cr(VI))	IEC 62321:2008 Ed.1 Annex C	UV-Vis
	IEC 62321-7-1:2015	
Polybrominated Biphenyls(PBBs)	IEC 62321-6:2015	GC-MS
Polybrominated Diphenyl Ethers (PBDEs)	IEC 62321-6:2015	GC-MS
Phthalates(DBP, BBP, DEHP, DIBP)	Refer to IEC 62321-8 CDV	GC-MS

Test Result(s)

Tested Item(s)	Result		MDL
	(1)	(2)	
Lead(Pb)	N.D.	N.D.	2 mg/kg
Cadmium(Cd)	N.D.	N.D.	2 mg/kg
Mercury(Hg)	N.D.	N.D.	2 mg/kg
Hexavalent Chromium(Cr(VI))	---	N.D.	2 mg/kg
	N.D.▼	---	0.10 µg/cm ² (LOQ)

Test Report

Report No. SCL01J01793501

Page 3 of 6

Test Result(s)

Tested Item(s)	Result	MDL
	(2)	
Polybrominated Biphenyls(PBBs)		
Monobromobiphenyl	N.D.	5 mg/kg
Dibromobiphenyl	N.D.	5 mg/kg
Tribromobiphenyl	N.D.	5 mg/kg
Tetrabromobiphenyl	N.D.	5 mg/kg
Pentabromobiphenyl	N.D.	5 mg/kg
Hexabromobiphenyl	N.D.	5 mg/kg
Heptabromobiphenyl	N.D.	5 mg/kg
Octabromobiphenyl	N.D.	5 mg/kg
Nonabromobiphenyl	N.D.	5 mg/kg
Decabromobiphenyl	N.D.	5 mg/kg
Polybrominated Diphenyl Ethers(PBDEs)		
Monobromodiphenyl ether	N.D.	5 mg/kg
Dibromodiphenyl ether	N.D.	5 mg/kg
Tribromodiphenyl ether	N.D.	5 mg/kg
Tetrabromodiphenyl ether	N.D.	5 mg/kg
Pentabromodiphenyl ether	N.D.	5 mg/kg
Hexabromodiphenyl ether	N.D.	5 mg/kg
Heptabromodiphenyl ether	N.D.	5 mg/kg
Octabromodiphenyl ether	N.D.	5 mg/kg
Nonabromodiphenyl ether	N.D.	5 mg/kg
Decabromodiphenyl ether	N.D.	5 mg/kg

Tested Item(s)	Result	MDL
	(2)	
Phthalates		
Dibutyl phthalate(DBP) CAS#:84-74-2	N.D.	50 mg/kg
Benzylbutyl phthalate(BBP) CAS#:85-68-7	N.D.	50 mg/kg
Di-2-ethylhexyl phthalate(DEHP) CAS#:117-81-7	N.D.	50 mg/kg
Diisobutyl phthalate(DIBP) CAS#:84-69-5	N.D.	50 mg/kg

Tested Sample/Part Description

- (1) Metal pin with silvery plating
- (2) Green body(Tested as a whole)*

Test Report

Report No. SCL01J01793501

Page 4 of 6

Remark: The sample(s) had been dissolved totally tested for Lead, Cadmium, Mercury.

-MDL = Method Detection Limit

-N.D. = Not Detected (<MDL or LOQ)

-mg/kg = ppm = parts per million

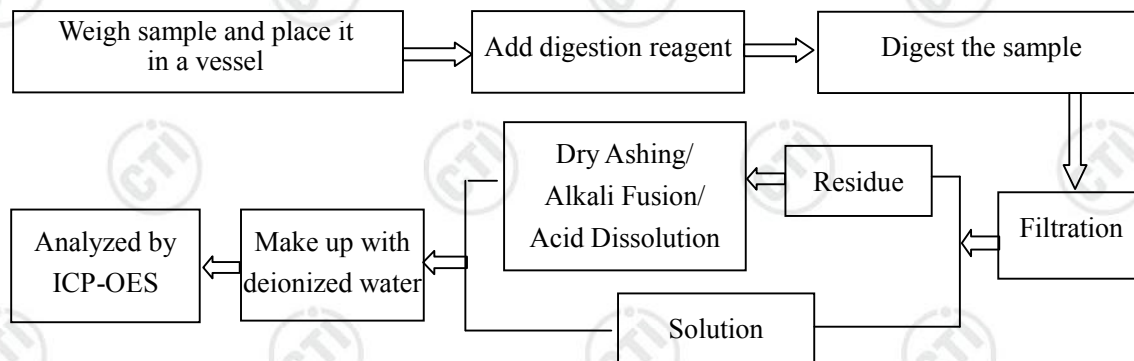
-LOQ = Limit of Quantification, The LOQ of Hexavalent chromium is 0.10 $\mu\text{g}/\text{cm}^2$

- ∇ The sample is negative for Cr(VI) – The Cr(VI) concentration is below 0.10 $\mu\text{g}/\text{cm}^2$. The coating is considered a non-Cr(VI) based coating.

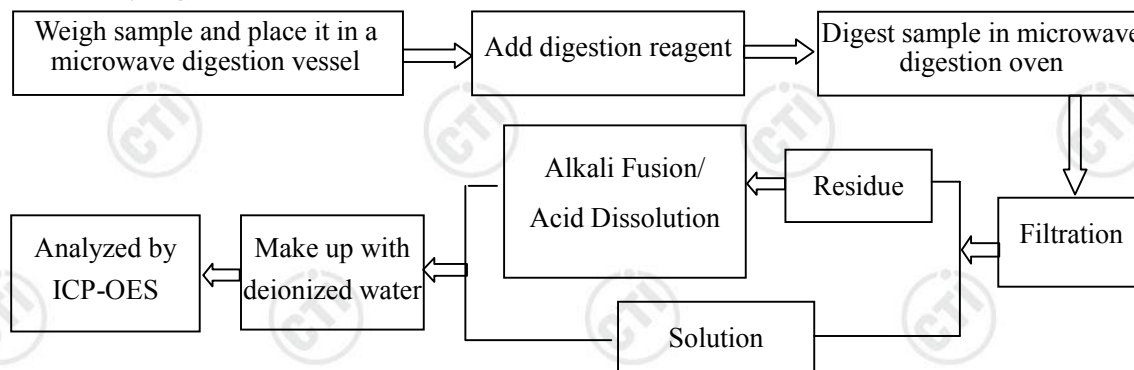
-*The sample(s) was tested as a whole, because it's impossible to disassemble or separate it by current equipment and technology. The result(s) shown on this report may be different from the content of any homogeneous material.

Test Process

1. Lead(Pb), Cadmium(Cd)



2. Mercury(Hg)



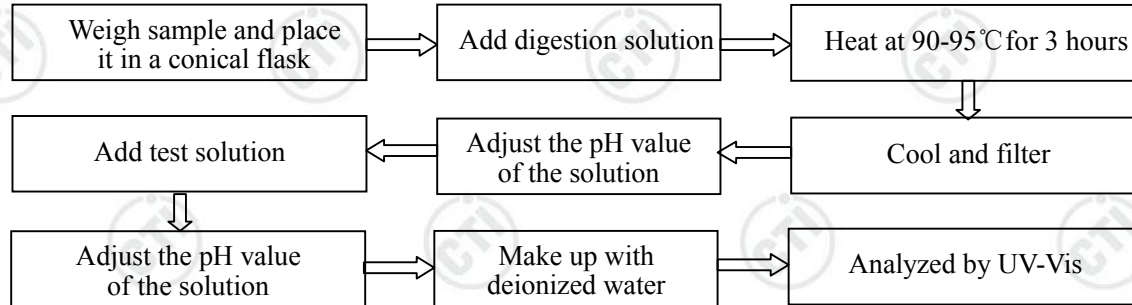
Test Report

Report No. SCL01J01793501

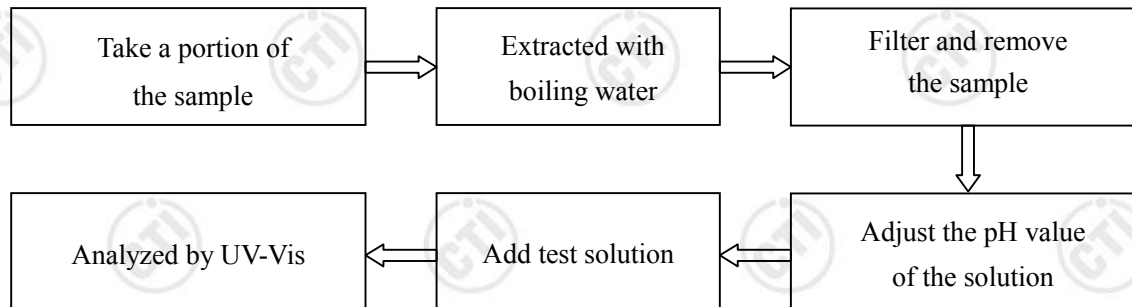
Page 5 of 6

3. Hexavalent Chromium (Cr(VI))

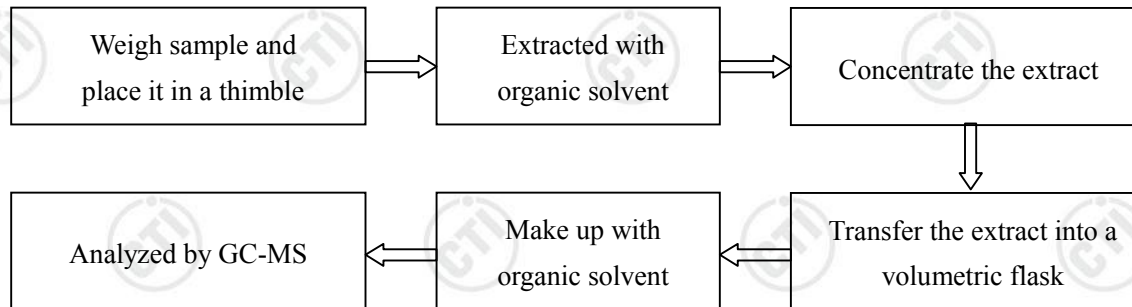
(1) IEC 62321:2008 Ed.1 Annex C



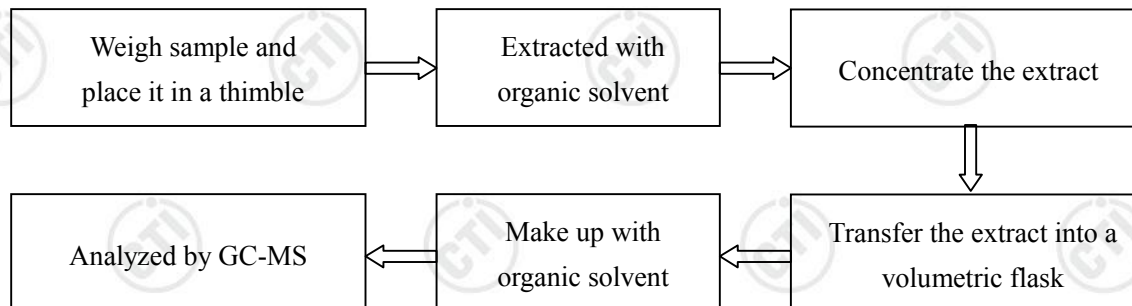
(2) IEC 62321-7-1:2015



4. Polybrominated Biphenyls(PBBs), Polybrominated Diphenyl Ethers(PBDEs)



5. Phthalates(DBP, BBP, DEHP, DIBP)



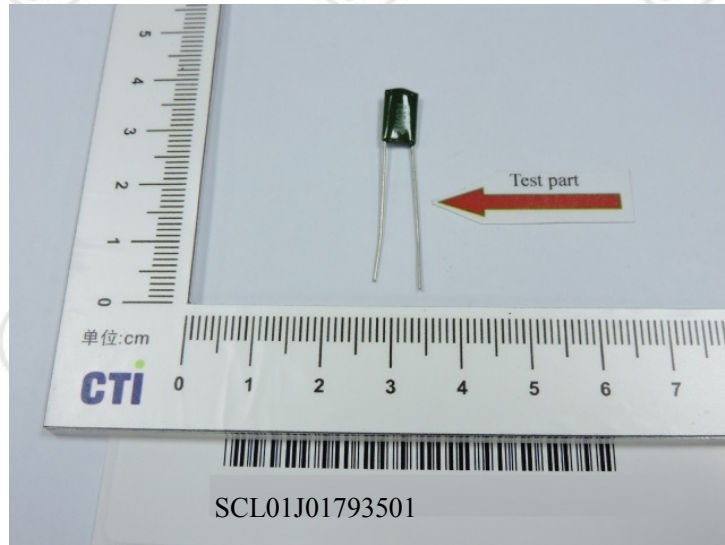
Test Report

Report No. SCL01J01793501

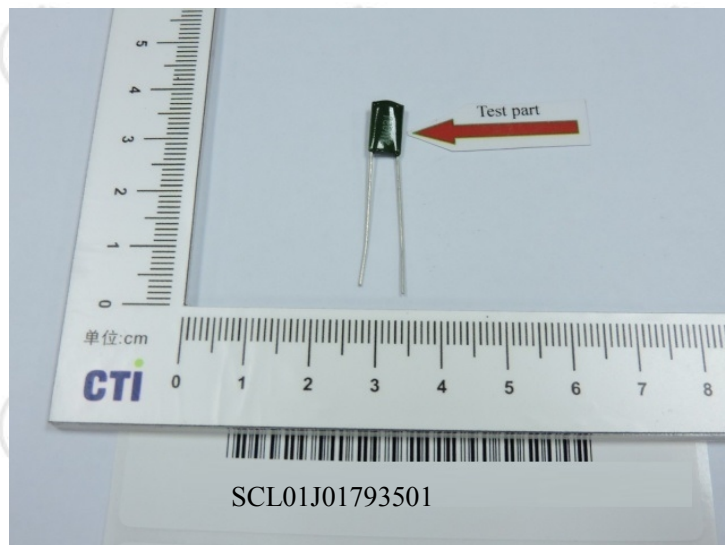
Page 6 of 6

Photo(s) of the sample(s)

(1)



(2)



*** End of Report ***

The test report is effective only with both signature and specialized stamp. The result(s) shown in this report refer only to the sample(s) tested. Without written approval of CTI, this report can't be reproduced except in full.